

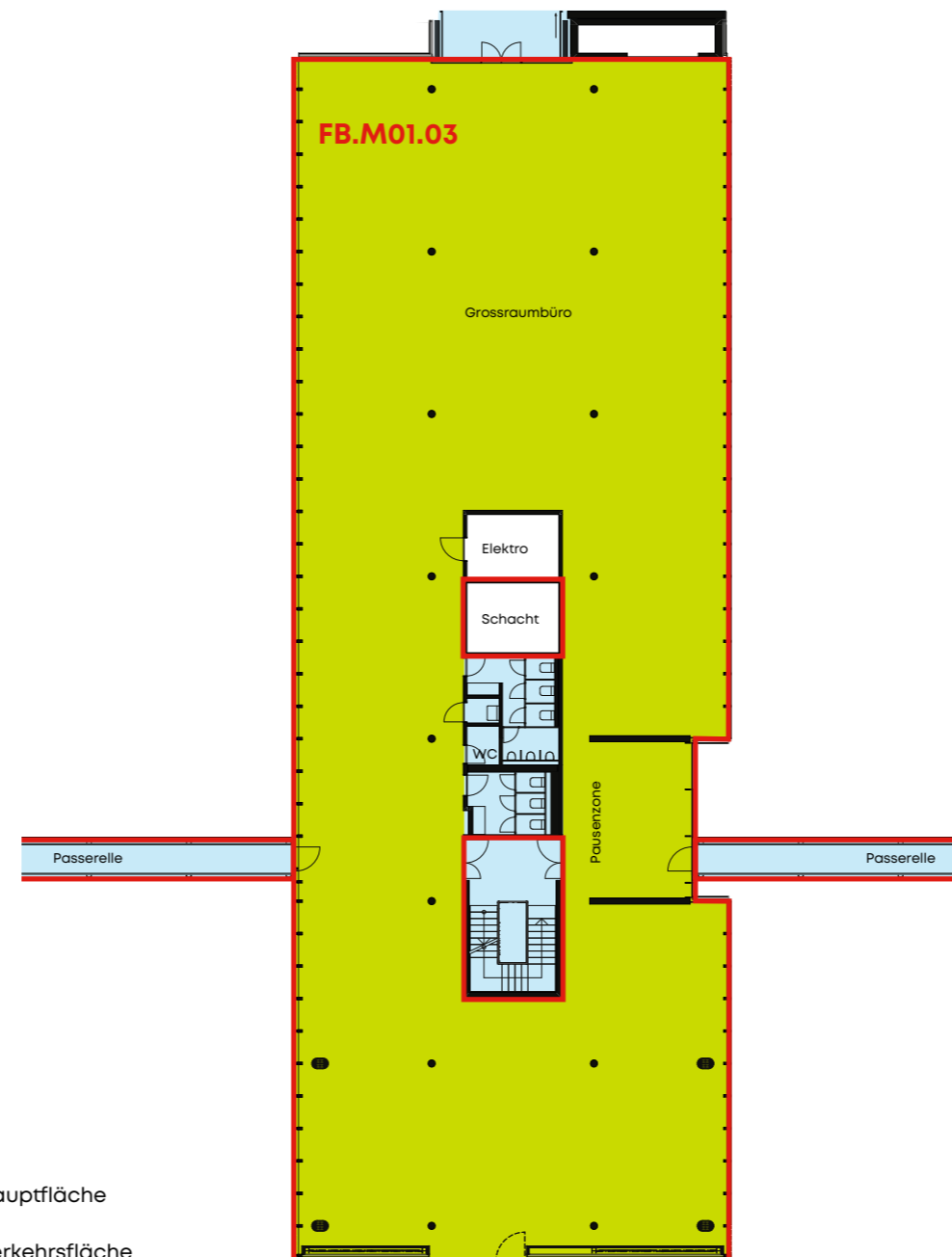
## Fingertrakt B

**3. Obergeschoss**  
Mieteinheit gesamt

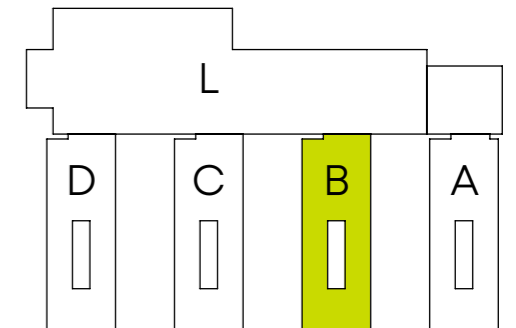
ca. 827 m<sup>2</sup>

**MIETEINHEIT**

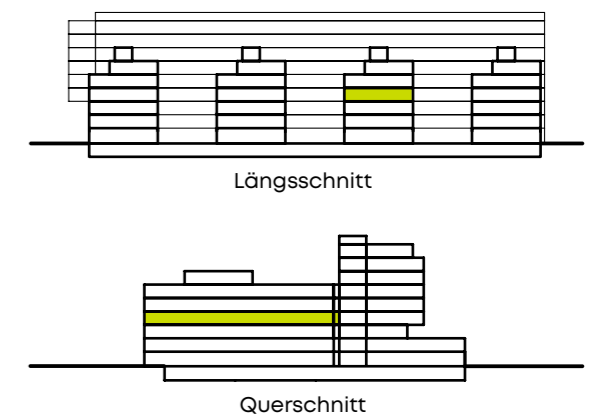
**FB.M01.03** 827 m<sup>2</sup>



LAGEPLAN



STOCKWERKPLAN



**Kontakt**  
SPGI Zurich AG  
Seestrasse 17  
CH-8702 Zollikon/Zürich

T +41 44 388 58 23  
konnex@spgizh.ch



0 5 10 m  
Massstab 1:300