

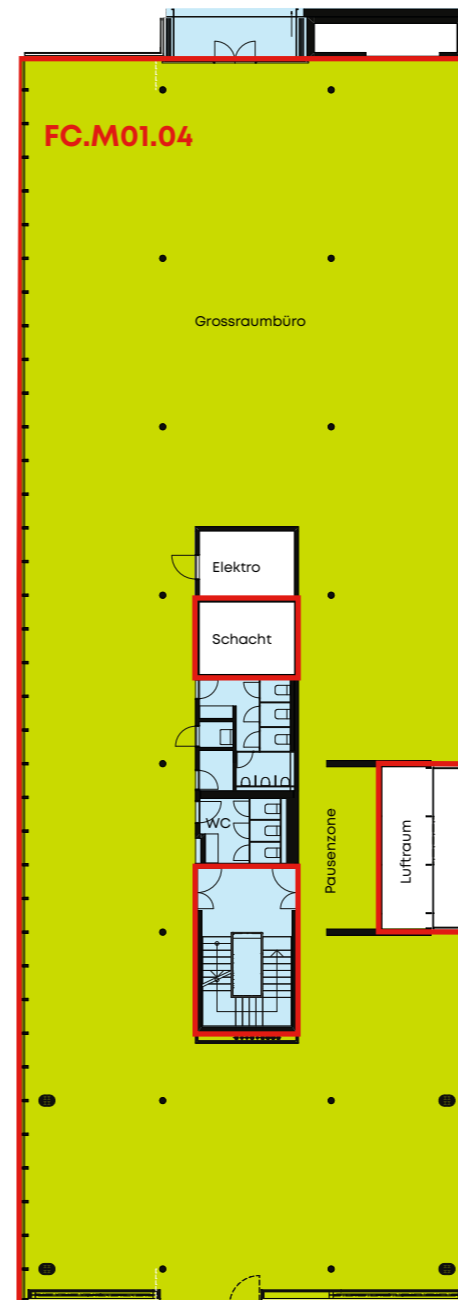
## Fingertrakt C

**4. Obergeschoss**  
Mieteinheit gesamt

ca. 814 m<sup>2</sup>

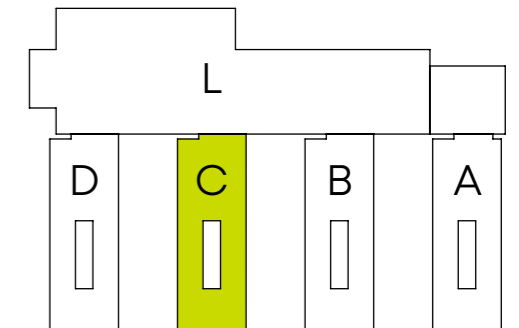
**MIETEINHEIT**

**FC.M01.04** 814 m<sup>2</sup>

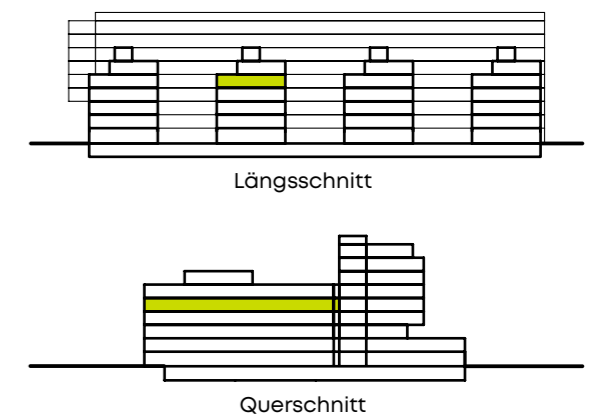


- Hauptfläche
- Verkehrsfläche

### LAGEPLAN



### STOCKWERKPLAN



**Kontakt**  
SPGI Zurich AG  
Seestrasse 17  
CH-8702 Zollikon/Zürich

T +41 44 388 58 23  
konnex@spgizh.ch



0 5 10 m  
Massstab 1:300